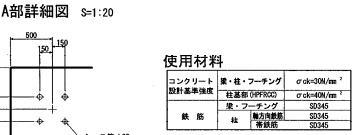
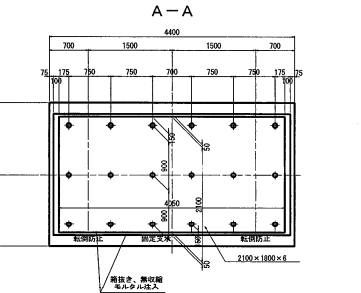
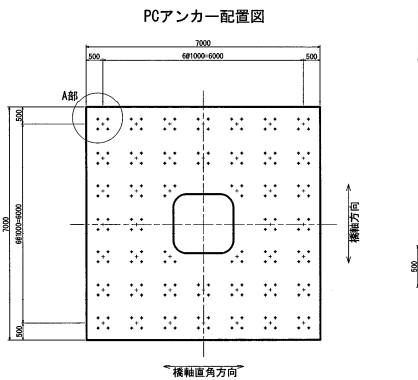
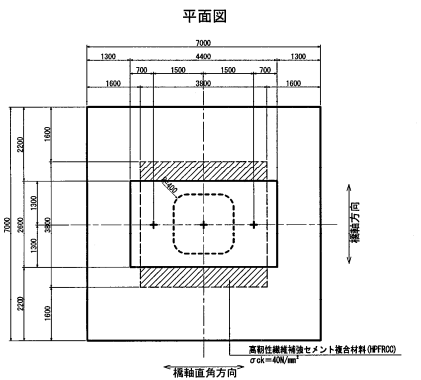
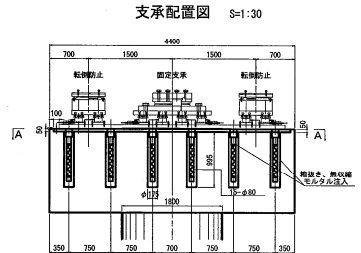
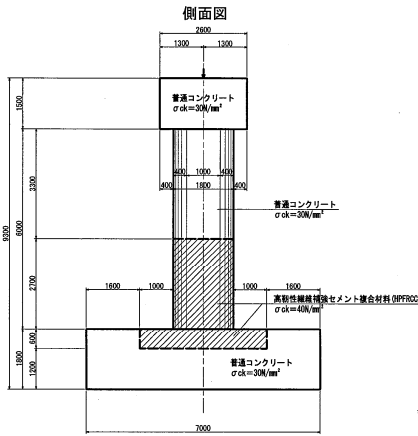
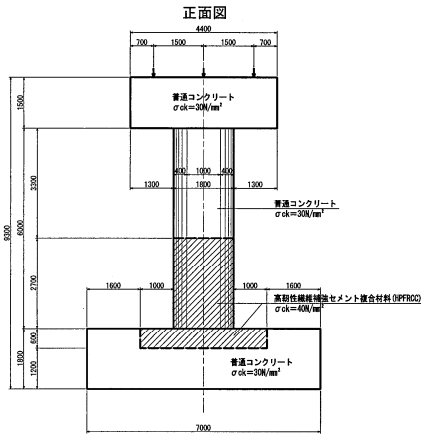


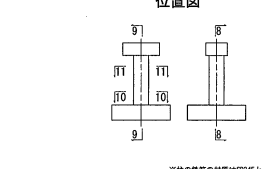
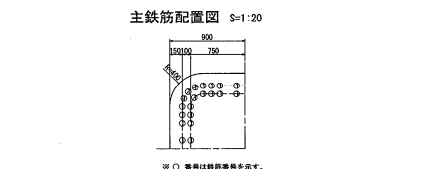
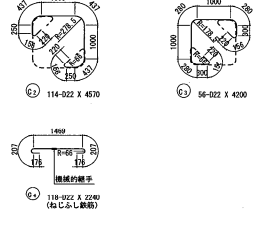
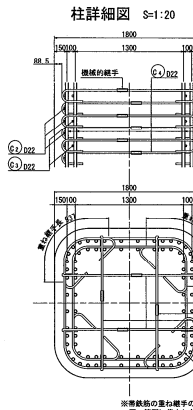
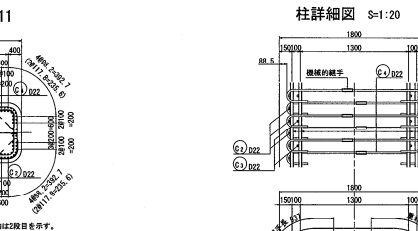
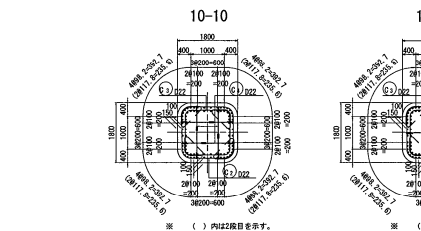
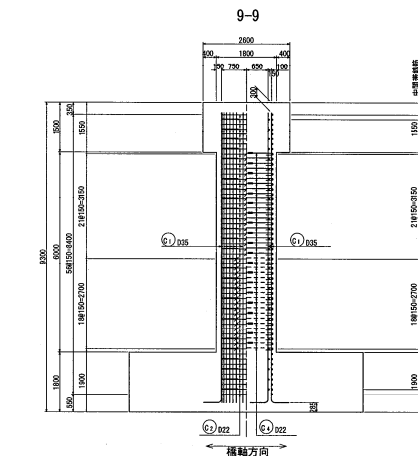
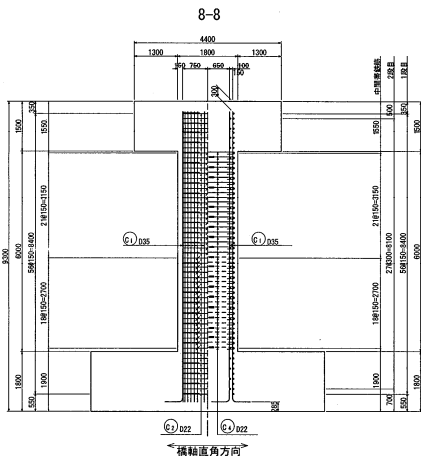
C1-6橋脚 構造図 S=1:50



使用材料 (Materials Used)

材料名 (Material Name)	規格 (Specification)	σck (N/mm²)
コンクリート (Concrete)	普通・柱・フーチング (General, Column, Footing)	σck=30N/mm²
設計基準構成 (Design Standard Composition)	柱・柱・フーチング (Column, Column, Footing)	σck=40N/mm²
鉄筋 (Reinforcement)	丸鋼 (Round Bar)	S5345
	角鋼 (Angle)	S5345
	等脚角鋼 (Equal-leg Angle)	S5345

C1-6橋脚 配筋図 (その2) S=1:50



※ ○ 番号は鉄筋番号を示す。

※ 等脚鉄筋の重ね継手の位置はゲージ位置を避けて同一箇所には集中しないよう90°ずらす。

※ 柱の鉄筋の材質はS5345とする。